

EPLUS MANAGED SD-WAN

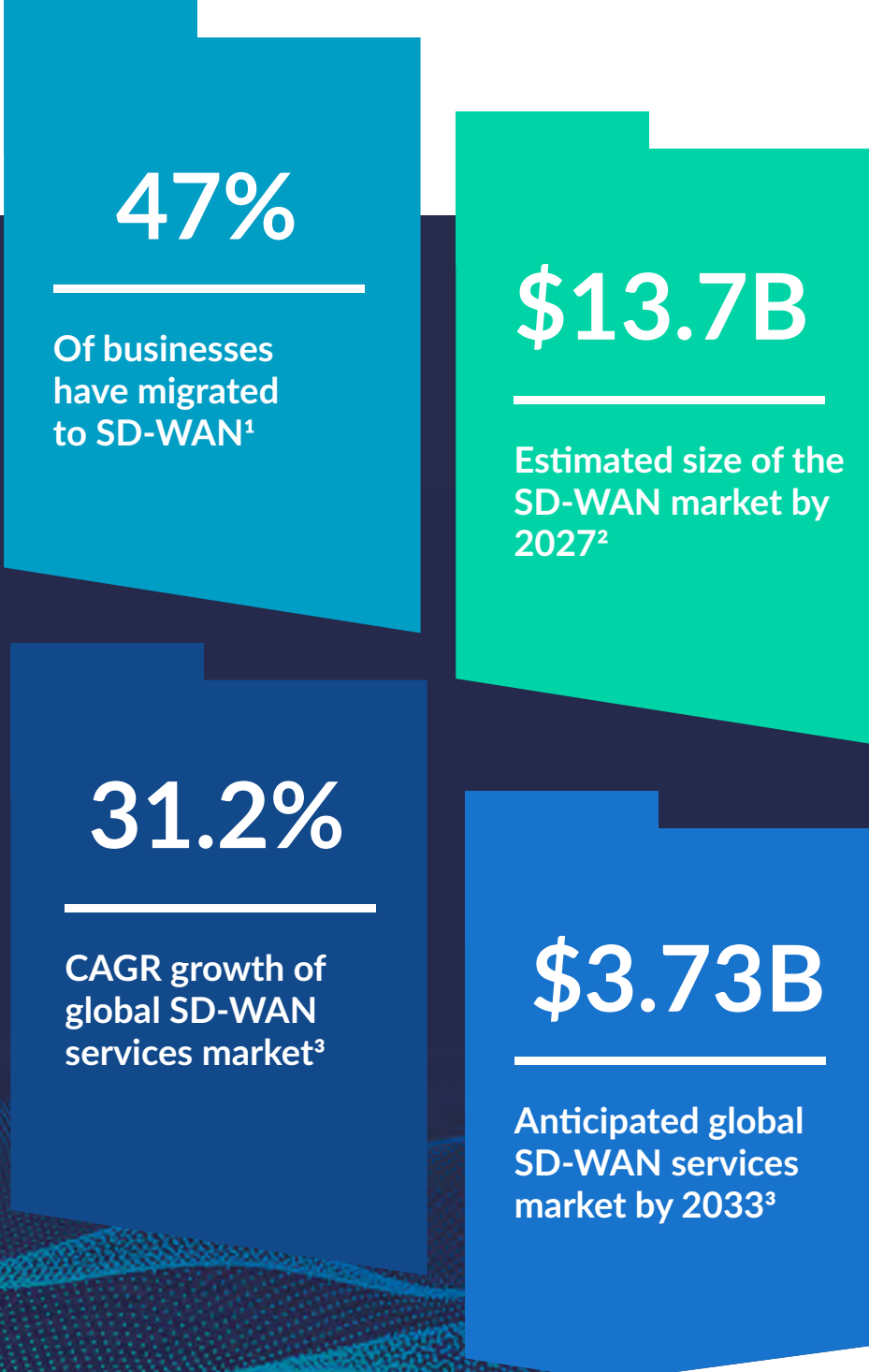
Is Your Network SD-WAN Ready?

If you're like most organizations, your IT team is facing increasing demands. Your customers want to experience more...and, in response, your branch offices need to deliver more:

- ✔ Hybrid-Cloud Access
- ✔ Bandwidth Optimization
- ✔ Video Conferencing
- ✔ Application Performance Improvement
- ✔ Video Conferencing

Mainstream Adoption of SD-WAN

Many customers are turning to software-defined wide area networking (SD-WAN) and ePlus Managed Services to provide a better experience, reduce costs, improve application performance, and incorporate better security across the board.

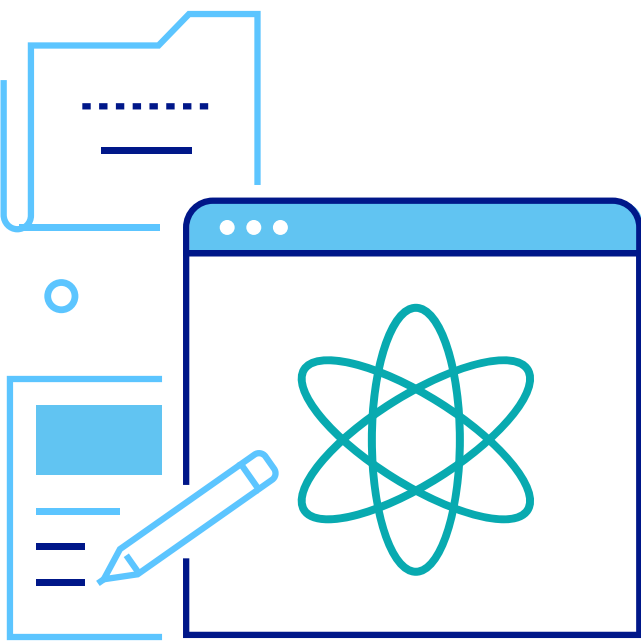


Transformation and Disruption

SD-WAN is transforming the way we do business, but it is also considered one of the most disruptive infrastructure technologies. To realize the full benefits, it requires an engineering shift in mindset and responsibilities—and not all organizations have the internal knowledge or bandwidth to effectively manage it. SD-WAN is now a foundational component of SASE, providing additional layers of network security with integrations to CASB, Cloud SWG, ZTNA/VPN, FWaaS, end-point protection, and sandboxing. The future of hybrid work leverages SASE and SD-WAN to ensure security and performance.

ePlus Managed SD-WAN

ePlus brings a unique skillset to our Managed SD-WAN offering, leveraging industry-leading SD-WAN technology from Cisco (Viptela and Meraki), Fortinet, and Palo Alto Networks along with state-of-the-art tools from ScienceLogic and LiveAction as well as best-of-breed service provider connectivity. ePlus Managed Services delivers what traditional WANs cannot to support cloud, application visibility, management, security, and redundancy.



Built on Managed Services:

Offload the management and remediation of your SD-WAN solution through ePlus Managed Services to maximize your agility, application control, and efficiency while maintaining your internal staff's focus on strategic business outcomes

<p>24 x 7 x 365 Support</p>	<p>People, Process, Tools</p>	<p>ITIL / SSAE16 Audited</p>	<p>Predictable Outcomes</p>	<p>Enhanced Visibility and Analytics</p>
-----------------------------	-------------------------------	------------------------------	-----------------------------	--

Across-the-Board Benefits

- ✔ Give branch offices more connectivity (increase bandwidth by up to 20x)
- ✔ Improve the overall performance of your SD-WAN environment
- ✔ Leverage built-in advanced security functions
- ✔ Optimize IT and connectivity costs
- ✔ Simplify management with application-aware features

Are You Ready for SD-WAN?

The ePlus SD-WAN READI Assessment and Selection Methodology identifies how SD-WAN's application visibility, performance, security, resiliency, and cost savings compare to your current WAN. Click the button below to learn more about our readiness assessment and how ePlus can help you design, implement, and manage your SD-WAN.

[Find Out How.](#)



Where Technology Means More®

©2023 ePlus inc. All rights reserved. ePlus, the ePlus logo, and all referenced product names are trademarks or registered trademarks of ePlus inc. All other company names, logos, and products mentioned herein are trade-marks or registered trademarks of their respective companies. ¹IDC White Paper – Realizing the Full Potential of SD-WAN ²MarketsandMarkets™ Report ³Future Market Insights – Managed SD-WAN Services Market Report

