

EPLUS SD-WAN

# Is Your Network SD-WAN Ready?

If you're like most organizations, your IT team is facing increasing demands. Your customers want to experience more...and, in response, your branch offices need to deliver more:

- ✔ Hybrid-Cloud Access
- ✔ Bandwidth Optimization
- ✔ Video Conferencing
- ✔ Application Performance Improvement
- ✔ Resiliency

## Mainstream Adoption of SD-WAN

Many customers are turning to software-defined wide-area networking (SD-WAN) and ePlus to provide a better experience, reduce costs, improve application performance, and incorporate better security across the board.

**\$5.2B**

.....  
Estimated size of the SD-WAN infrastructure market by 2028<sup>1</sup>

**90.8%**

.....  
Of enterprises have SD-WAN as a strategy<sup>2</sup>

**66%**

.....  
Two thirds of end users who implement SD-WAN will favor a managed service approach<sup>3</sup>

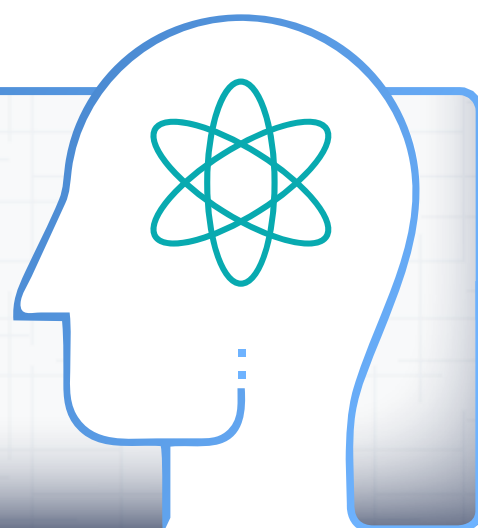


## Transformation and Disruption

SD-WAN is transforming the way we do business, but it is also considered one of the most disruptive infrastructure technologies<sup>4</sup>. To realize the full benefits, it requires an engineering shift in mindset and responsibilities—and not all organizations have the internal knowledge or bandwidth to effectively manage it.

**ePlus  
SD-WAN**

ePlus brings a unique skillset to SD-WAN solutions. We leverage industry-leading, best-of-breed technology, service provider connectivity, and an ePlus SD-WAN Managed Services option to deliver what traditional WANs cannot. Your modern network should support cloud access, application awareness, diversity, visibility, and management using a READI – Resiliency, Efficiency, Agility, Defensive and Intelligent-architecture. ePlus can help you get started.



## Built on Managed Services:

Offload the management and remediation of your SD-WAN solution through ePlus Managed Services to maximize your agility, application control, and efficiency while maintaining your internal staff's focus on strategic business outcomes.



24 x 7 x 365  
Support



People, Process,  
Tools



ITIL / SSAE16  
Audited



Predictable  
Outcomes



Enhanced Visibility  
and Analytics

## Across-the-Board Benefits

- ✔ Give branch offices more connectivity (increase bandwidth by up to 20x)
- ✔ Improve the overall performance of your SD-WAN environment
- ✔ Leverage built-in advanced security functions
- ✔ Optimize IT and connectivity costs
- ✔ Simplify management with application-aware features

## Are You Ready for SD-WAN?

The ePlus SD-WAN Readiness Assessment identifies how SD-WAN's application visibility, performance, resiliency, and cost savings compare to your current WAN. Click the button below to learn more about our readiness assessment and how ePlus can help you design, implement, and manage your SD-WAN.