

5 steps to creating an AI data governance policy

Responsible AI starts here.

**COMPROMISE
NOTHING**

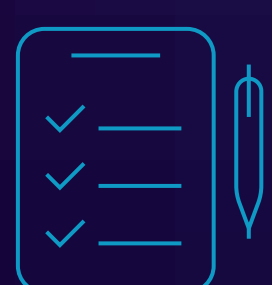
An AI data governance policy is a practical document that defines how AI should be used within your organization. It differs from a standard data governance policy in some key ways, although both contain the same basic elements.

Follow the steps below to make sure the differences are not overlooked.



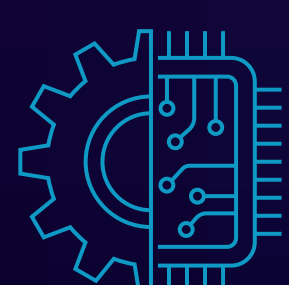
Step 1: Clarify the purpose and scope

Be clear about what the policy is for. An AI data governance policy specifically covers the management of organizational data (ensuring data quality, integrity, security, and compliance) used by AI systems, with the added focus of making sure the data used to train AI models is unbiased, ethical, and transparent.



Step 2: Define ethical use

Create guiding principles such as fairness, transparency, and accountability. Clearly define what ethical use of AI means in your organization and include it in the policy.



Step 3: Include provisions for AI models

AI models analyze data and make decisions. Make sure your policy addresses governance of AI models and decision-making processes of AI systems to prevent biases and ensure accuracy, fairness, and diversity.



Step 4: Address specific use case or department requirements

Each use case or department may have specific needs when it comes to the management, protection, authorization, and use of data sources by AI systems. Include provisions in the policy to satisfy those requirements.



Step 5: Specify compliance requirements

The regulatory landscape for AI is evolving. Make sure your policy has provisions for any AI-specific regulations (or ones that may emerge) to ensure your organization is compliant.



Start now

An AI data governance policy is a foundational part of your AI strategy. It is key to ensuring AI delivers value in a responsible way. Creating a policy requires cross-functional participation and oversight by subject matter experts from inside (and perhaps outside) of your organization.

Is your AI data secure?

[Start assessment](#)